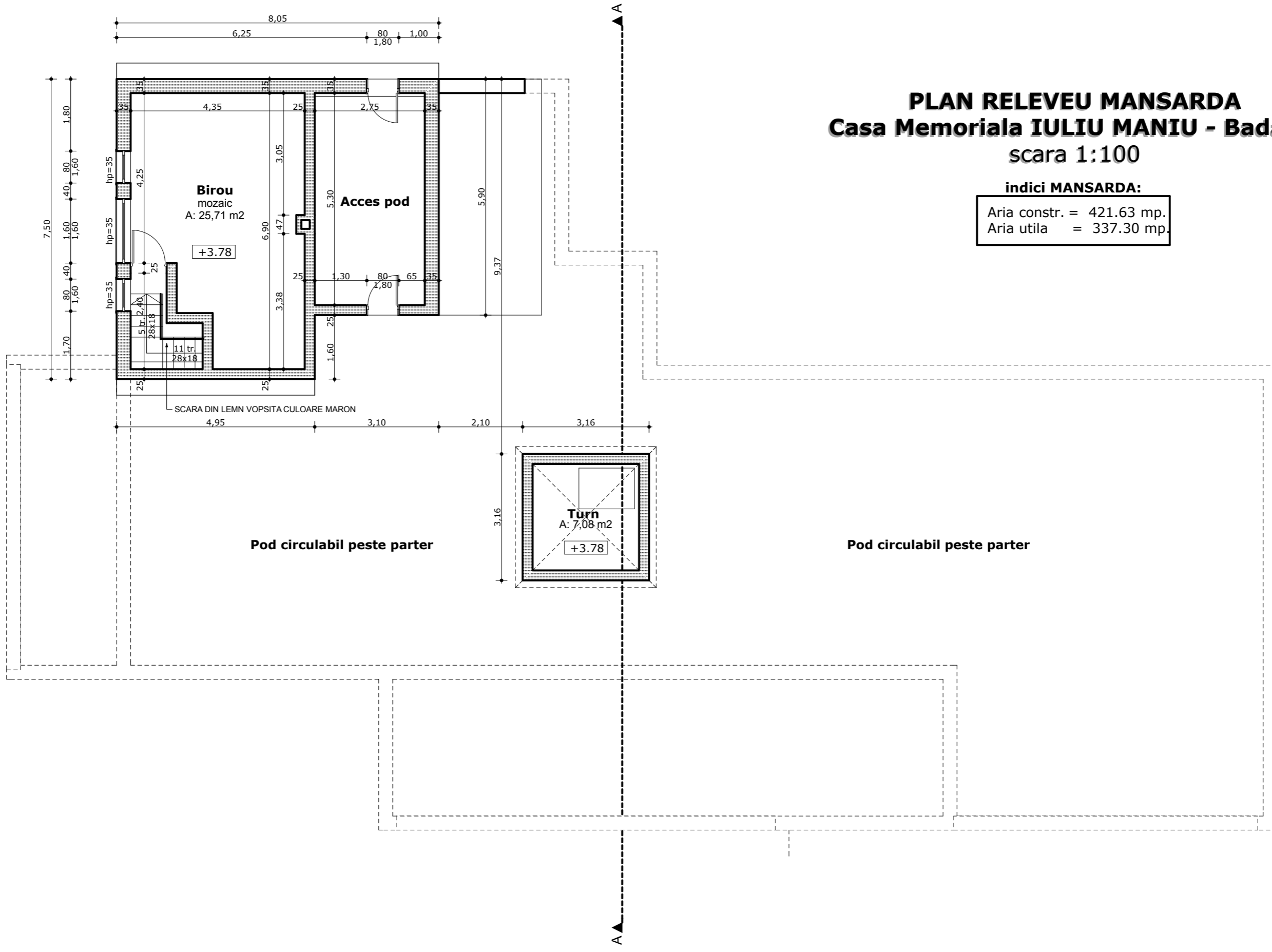





# PLAN RELEVU MANSARDA Casa Memoriala IULIU MANIU - Badacin scara 1:100

## indici MANSARDA:

Aria constr. = 421.63 mp.  
Aria utila = 337.30 mp.



### Legenda:

-  Peretii portanti sunt: **35cm**, (1 rand caramida din argila arsa+ 3 randuri vaioaga - caramida nearsa), cu liant din agila lutoasa
-  **25cm**, (1 rand caramida din argila arsa+ 3 randuri vaioaga - caramida nearsa), cu liant din agila lutoasa
-  Contur ziduri exterioare parter